

CORNERSTONE
DEVELOPMENT

	<u>At Grade</u>	<u>Lookout</u>
<u>Bristol – 1,738sqft.*</u>	<u>\$534,999</u>	<u>\$564,999</u>
<u>Kenzie – 1,874sqft.*</u>	<u>\$544,999</u>	<u>\$574,999</u>
<u>Calli – 1,877sqft.*</u>	<u>\$544,999</u>	<u>\$574,999</u>
<u>Tartan – 2,013sqft.*</u>	<u>\$559,999</u>	<u>\$589,999</u>

Duplexes – Add \$5K to above base

★ - Add \$19,999 for three car garage

***LO/WO Homes include exposure additions, deck, & patio w/WO**



Stand Alone Condominium Homes



Home Pricings

Effective 09/01/2023

Lookout

Holly-	\$604,999
Cypress-	\$614,999
Hawthorne-	\$624,999
Laurel-	\$629,999
Willow-	\$634,999
Juniper-	\$649,999

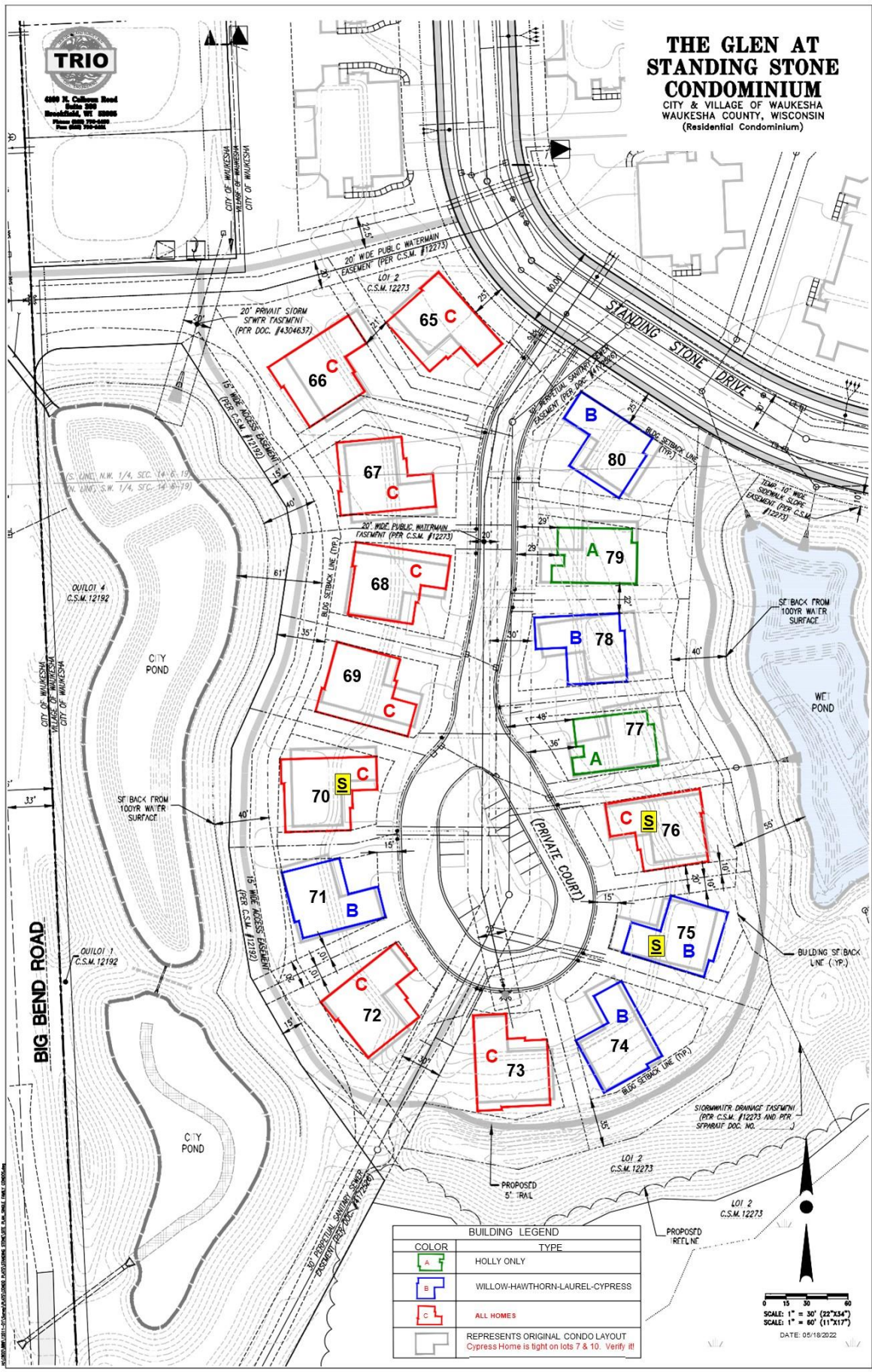
All homes include partial
(Lookout) exposure with lot
except homesite 1.

All homes are complete with homesite, home, landscaping, irrigation, driveway, community clubhouse and a turn-key purchase process. Includes exposure additions & deck.



THE GLEN AT STANDING STONE CONDOMINIUM

CITY & VILLAGE OF WAUKESHA
WAUKESHA COUNTY, WISCONSIN
(Residential Condominium)



BUILDING LEGEND	
COLOR	TYPE
A	HOLLY ONLY
B	WILLOW-HAWTHORN-LAUREL-CYPRESS
C	ALL HOMES
REPRESENTS ORIGINAL CONDO LAYOUT Cypress Home is tight on lots 7 & 10. Verity !!!	

