

The Glen at Standing Stone

Effective – 05/02/2024
~Prices Subject to Change~



● Ready Homes & In Progress Homes – See List
S = SOLD R = RESERVED
LO = Lookout Lower-Level

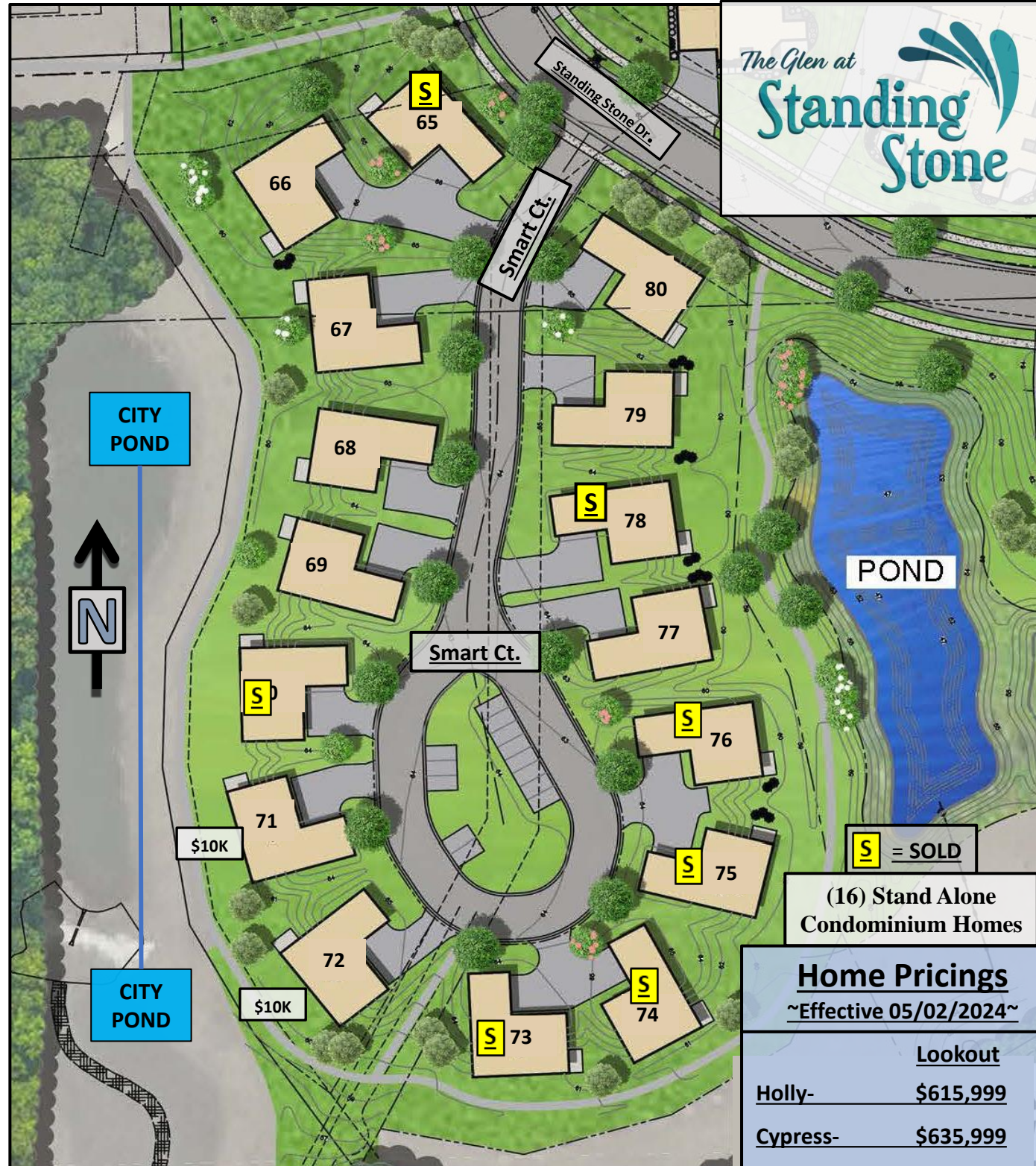


Building Exceptional Lifestyles, Everyday!

Floor Plan	At Grade	Lookout
Bristol – 1,727sqft.*	\$559,999	\$604,999
Kenzie – 1,863sqft.*	\$569,999	\$619,999
Calli – 1,877sqft.*	\$569,999	\$619,999
Tartan – 2,013sqft.*	\$584,999	\$634,999

Lookout homes include exposure additions & deck

- The Glen at Standing Stone -
- Waukesha, WI -



POND

S = SOLD

(16) Stand Alone
Condominium Homes

Home Pricings
~Effective 05/02/2024~

	Lookout
Holly-	\$615,999
Cypress-	\$635,999
Hawthorne-	\$645,999
Laurel-	\$640,999
Willow-	\$645,999
Juniper-	\$671,999

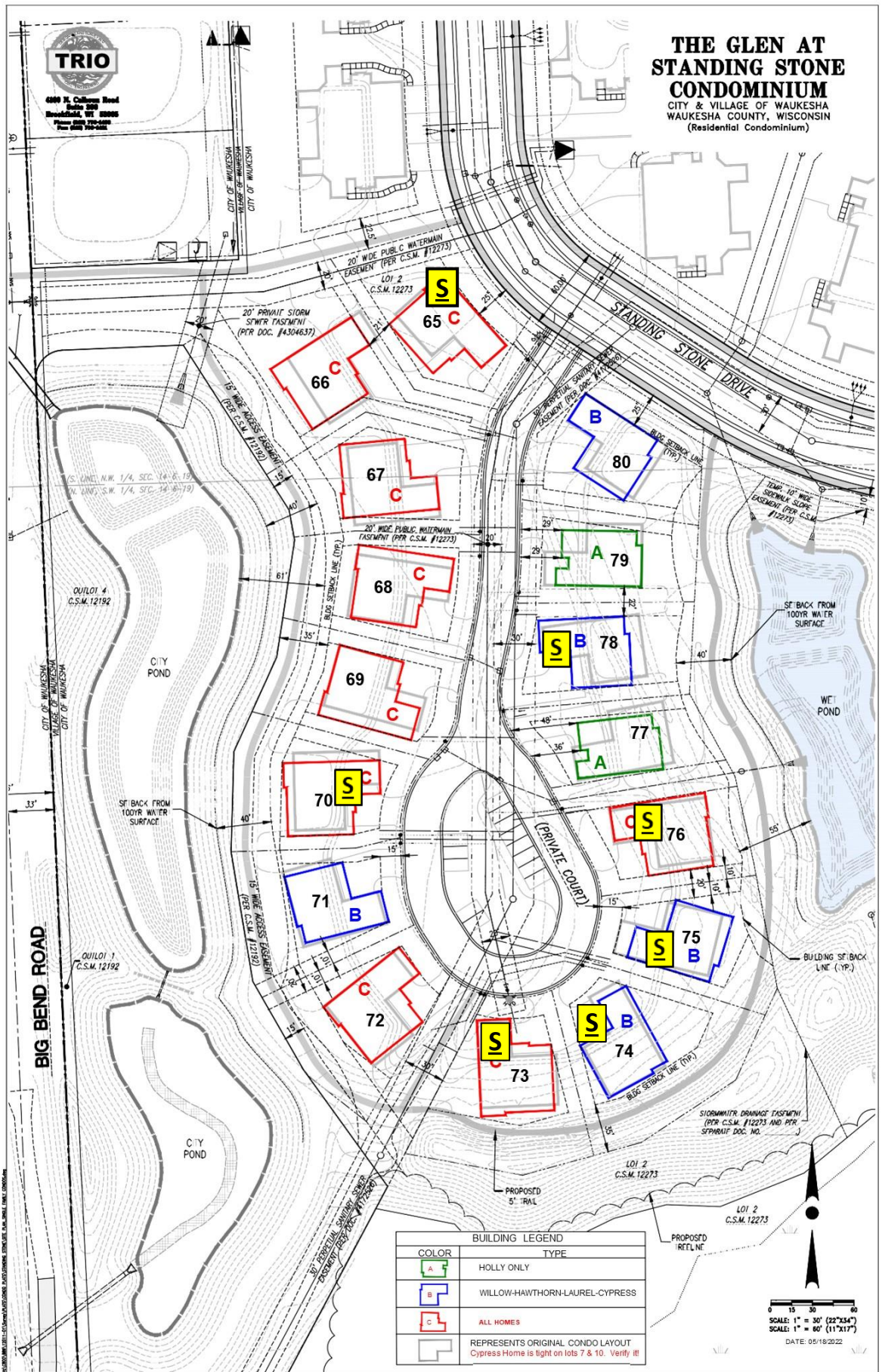
All homes include partial (Lookout) exposure with lot, except homesite #65.

All homes are complete with homesite, home, landscaping, irrigation, driveway, community clubhouse and a turn-key purchase process. Includes exposure additions & composite deck.

TRIO

6800 W. Columbia Road
Suite 300
Menasha, WI 53228
Phone 920.750.0000
Fax 920.750.0001

**THE GLEN AT
STANDING STONE
CONDOMINIUM**
CITY & VILLAGE OF WAUKESHA
WAUKESHA COUNTY, WISCONSIN
(Residential Condominium)



BUILDING LEGEND	
COLOR	TYPE
	HOLLY ONLY
	WILLOW-HAWTHORN-LAUREL-CYPRESS
	ALL HOMES
	REPRESENTS ORIGINAL CONDO LAYOUT Cypress Home is tight on lots 7 & 10. Verify !!

0 15 30 60
SCALE: 1" = 30' (22"x34")
SCALE: 1" = 60' (11"x17")
DATE: 05/18/2022