

The Glen at Standing Stone

Effective - 04/13/2024
~Prices Subject to Change~



○ Ready Homes & In Progress Homes - See List
S = SOLD **R** = RESERVED
 LO = Lookout Lower-Level



Building Exceptional Lifestyles, Everyday!

Floor Plan	At Grade	Lookout
Bristol - 1,727sqft.*	\$559,999	\$604,999
Kenzie - 1,863sqft.*	\$569,999	\$619,999
Calli - 1,877sqft.*	\$569,999	\$619,999
Tartan - 2,013sqft.*	\$584,999	\$634,999

Lookout homes include exposure additions & deck

- The Glen at Standing Stone -
- Waukesha, WI -

Any At Grade Home (-\$35K)

CITY POND



POND

S = SOLD

(16) Stand Alone
Condominium Homes

Home Pricings
~Effective 04/13/2024~

	Lookout
Holly-	\$615,999
Cypress-	\$635,999
Hawthorne-	\$645,999
Laurel-	\$640,999
Willow-	\$645,999
Juniper-	\$671,999

All homes include partial (Lookout) exposure with lot, except homesite #65.

CORNERSTONE

DEVELOPMENT

All homes are complete with homesite, home, landscaping, irrigation, driveway, community clubhouse and a turn-key purchase process. Includes exposure additions & composite deck.

\$10K

\$10K

CITY POND

Standing Stone Dr.

Smart Ct.

Smart Ct.

66

65

67

80

68

79

69

S 78

S 70

77

71

S 76

72

S 75

S 73

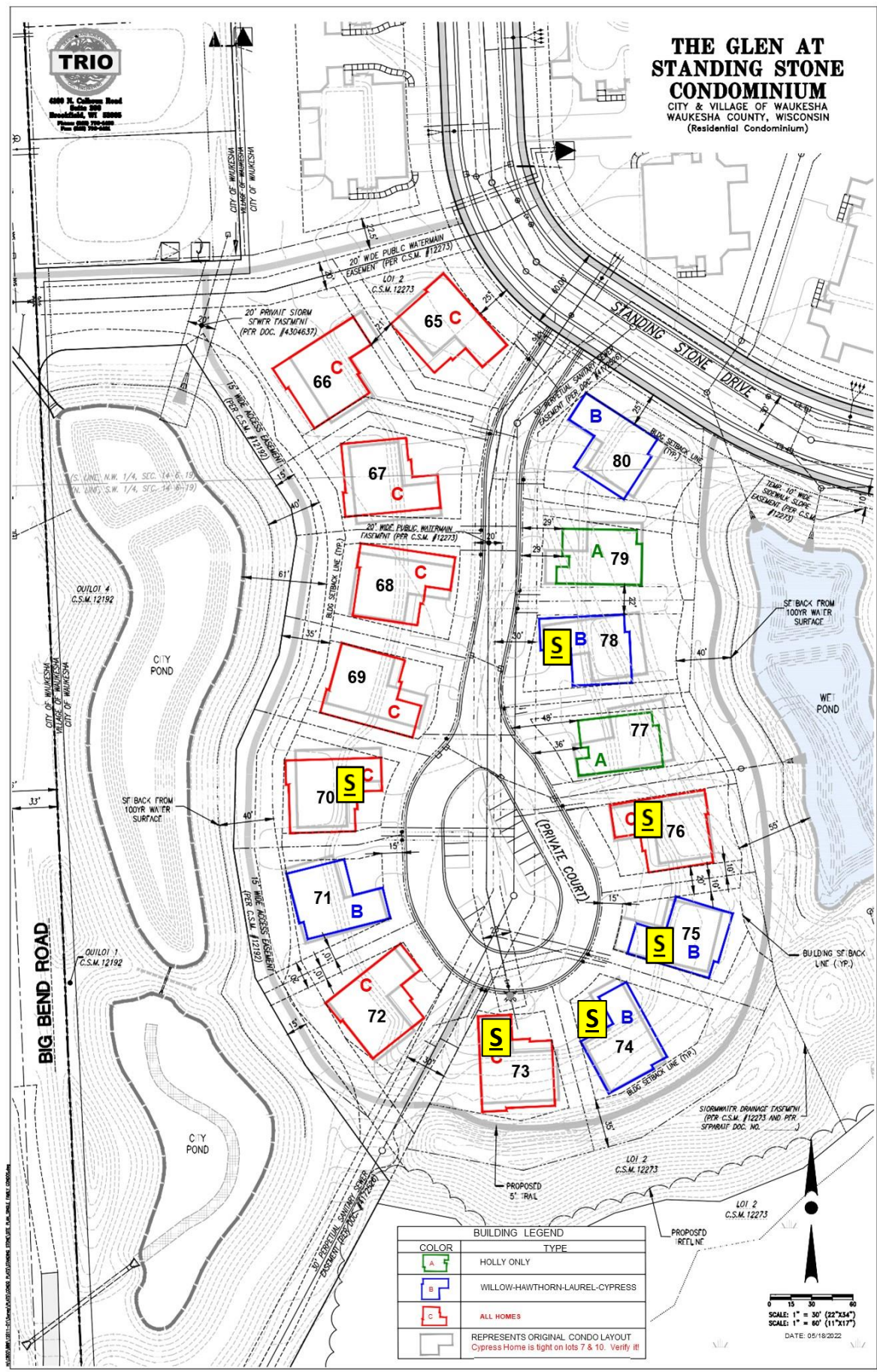
S 74



4800 W. Calumet Road
Suite 310
Mendota, WI 53188
Phone: 608.750.0000
Fax: 608.750.0001

THE GLEN AT STANDING STONE CONDOMINIUM

CITY & VILLAGE OF WAUKESHA
WAUKESHA COUNTY, WISCONSIN
(Residential Condominium)



BUILDING LEGEND	
COLOR	TYPE
	HOLLY ONLY
	WILLOW-HAWTHORN-LAUREL-CYPRESS
	ALL HOMES
	REPRESENTS ORIGINAL CONDO LAYOUT Cypress Home is tight on lots 7 & 10. Verify !!

0 15 30 60
SCALE: 1" = 30' (22"x34")
SCALE: 1" = 60' (11"x17")
DATE: 05/18/2022