



## The Cypress - Waukesha

**1,692 Sq. Ft. | 2 Bedrooms | 2 Bathrooms**

Cornerstone Development started with the simple idea that smart floor plans, high-quality building materials, and the right amenities in an association-maintained environment would give homeowners more of what they wanted, **Time**. And we've stayed true to that vision.

For more than 15 years we've been anticipating and accommodating the latest lifestyle trends. We've designed our communities with quiet streets and walking paths, perfect for exercising or taking a leisurely stroll. Our communities include well-appointed common spaces, both indoors and outdoors, plus the advantage of minimal maintenance. It's home ownership, without the hassle.

The Glen at Standing Stone is one of our lifestyle communities built on this tradition. This community has attached and standalone condominiums with all the amenities that make condominium life hassle-free. Enjoy shared spaces such as our clubhouse, pool, pickleball, and bocce courts along with access to all the suburban conveniences that make Waukesha a great place to live.

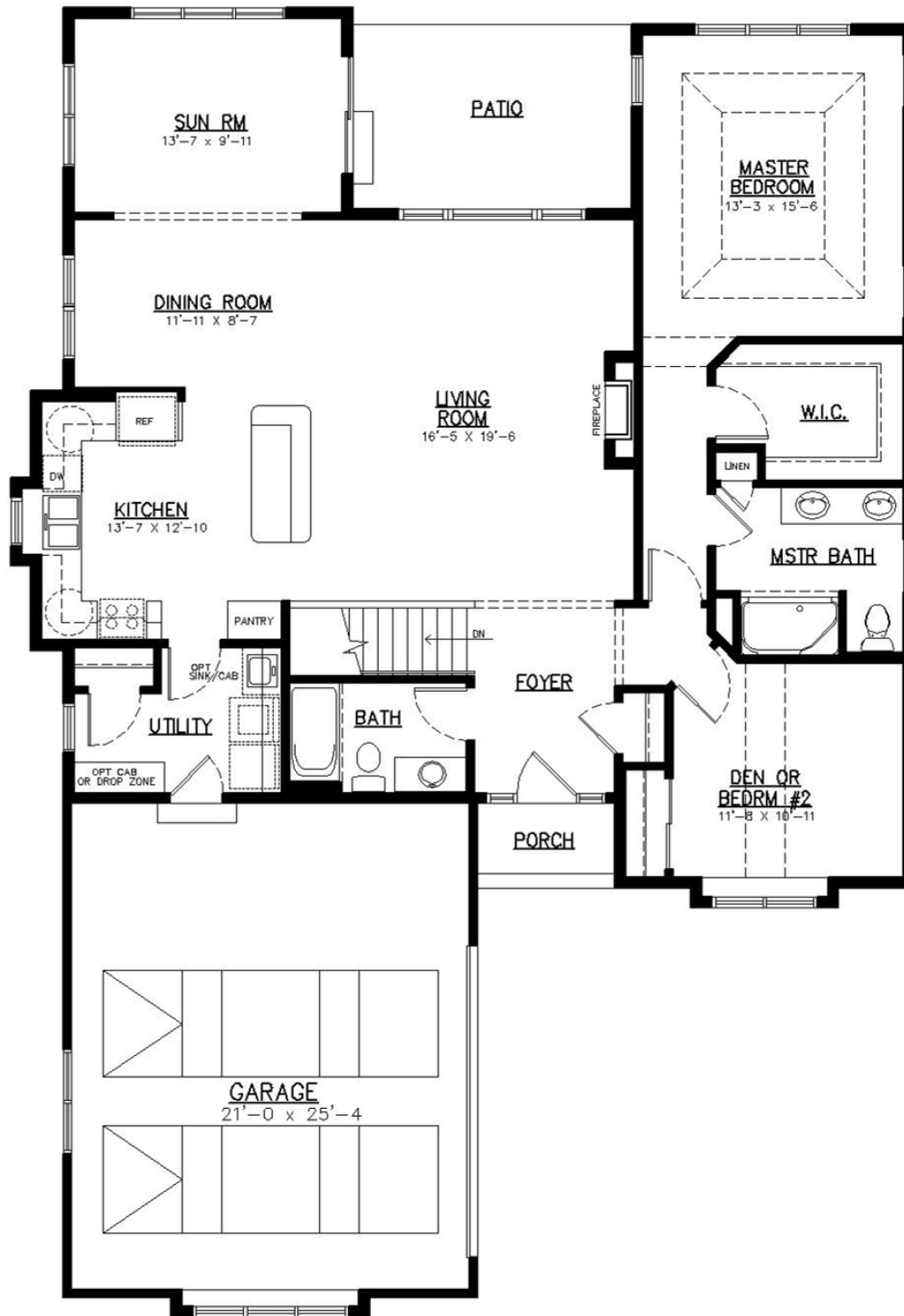
### Each Home Features:

- Thoughtfully designed, open-concept floor plans with generous storage
- Convenient ranch-style living
- Full lower level with an opportunity to be finished
- Natural setting with extensive walkability
- Landscaping with irrigation
- Lawn service, snow removal, and maintenance

***Experience Our Lifestyle and Low-maintenance Community Today!***

# The Cypress - Waukesha

1,692 Sq. Ft. | 2 Bedrooms | 2 Bathrooms



Scan to Learn More



Floor plan dimensions are approximate and may differ from actual plans that are subject to change without notice. Renderings are artist's conception only. Floor plans may vary elevation to elevation. Windows, doors and ceilings may vary on options and elevations selected. Specifications, equipment, features, options and pricing are subject to change without notice. Optional items indicated are available at an additional cost and some optional features may or may not be shown. Speak with a sales representative for complete information. Copyright © 2023. All Rights Reserved.

N63W23849 Main St. Sussex, WI 53089

cornerstonedevelopment.com | 262-751-7367

**CORNERSTONE**  
DEVELOPMENT