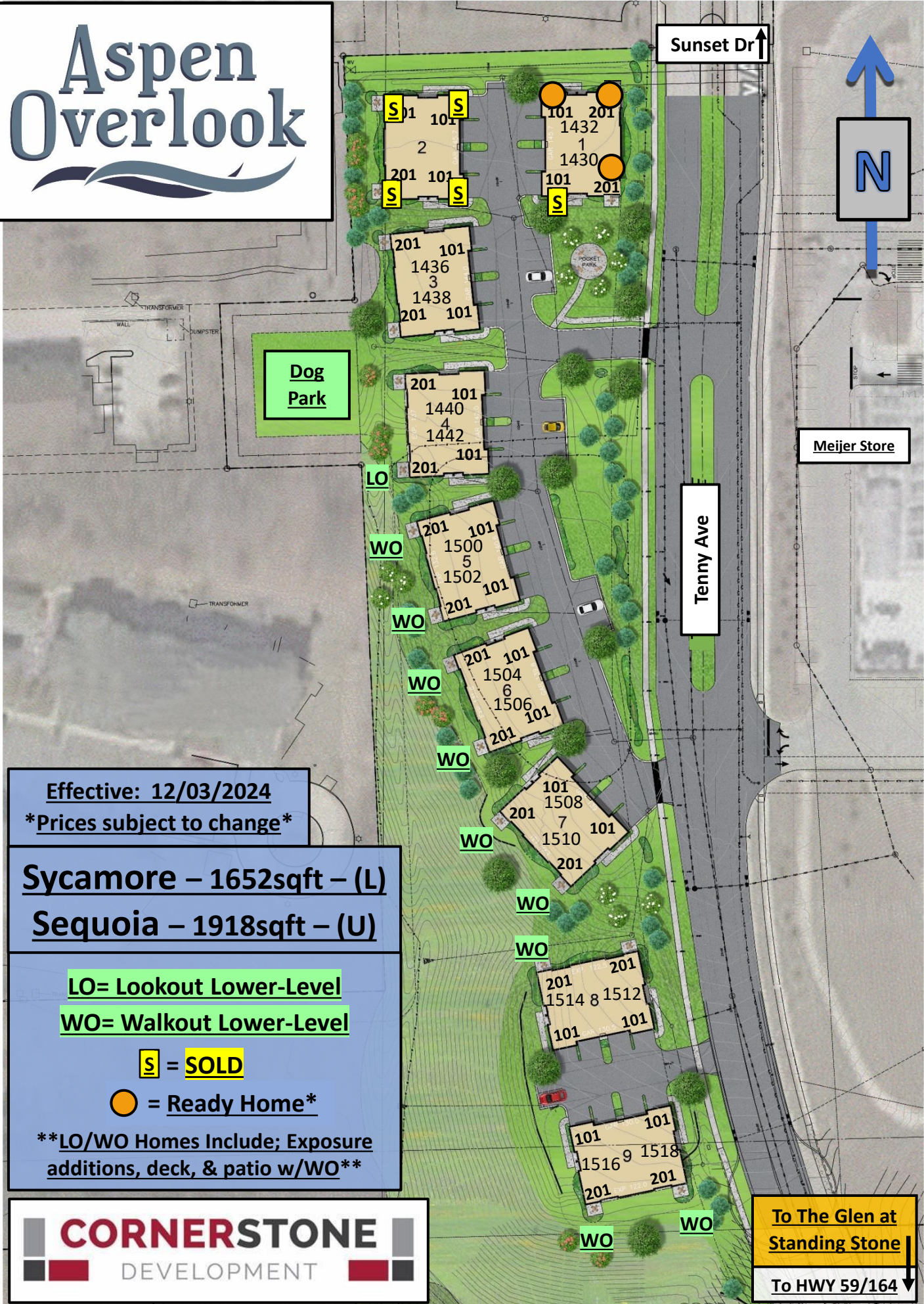


Aspen Overlook



Sunset Dr ↑



Meijer Store

Tenny Ave

To The Glen at Standing Stone ↓

To HWY 59/164 ↓

Effective: 12/03/2024
 Prices subject to change

Sycamore – 1652sqft – (L)
Sequoia – 1918sqft – (U)

LO= Lookout Lower-Level
WO= Walkout Lower-Level
S = SOLD
○ = Ready Home*
 LO/WO Homes Include; Exposure additions, deck, & patio w/WO



Aspen Overlook

Homes Currently Available For Sale & Upcoming Ready Homes

Address	Exposure	Pricing
<u>1430-201</u>	2 nd Floor	\$468,732 w/options 
<u>1432-101</u>	At-Grade	\$458,703 w/options 
<u>1432-201</u>	2 nd Floor	\$457,892 w/options 
<u>1436-101</u>	At-Grade	\$449,999 Base Only
<u>1436-201</u>	2 nd Floor	\$449,999 Base Only
<u>1438-101</u>	At-Grade	\$449,999 Base Only
<u>1438-201</u>	2 nd Floor	\$459,999 Base w/Prem
<u>1440-101</u>	At-Grade	\$449,999 Base Only
<u>1440-201</u>	2 nd Floor	\$449,999 Base Only
<u>1442-101</u>	Look Out	\$499,999 Base Only w/Prem
<u>1442-201</u>	2 nd Floor	\$464,999 Base Only w/Prem
<u>1500-101</u>	Walk Out	\$499,999 Base WO w/Prem
<u>1500-201</u>	2 nd Floor	\$464,999 Base w/Prem
<u>1502-101</u>	Walk Out	\$509,999 Base WO w/Prem
<u>1502-201</u>	2 nd Floor	\$474,999 Base w/Prem

Pricing & Availability – Subject to Change – 12/03/2024