

Aspen Overlook

Effective: 09/01/2023

Prices subject to change

Dog
Park

Sunset Dr ↑

Meijer Store

N

TENNEY AVENUE

Sycamore – 1652sqft – (L)

Sequoia – 1918sqft – (U)

LO= Lookout Lower-Level

WO= Walkout Lower-Level

S = SOLD

● = Ready Home*

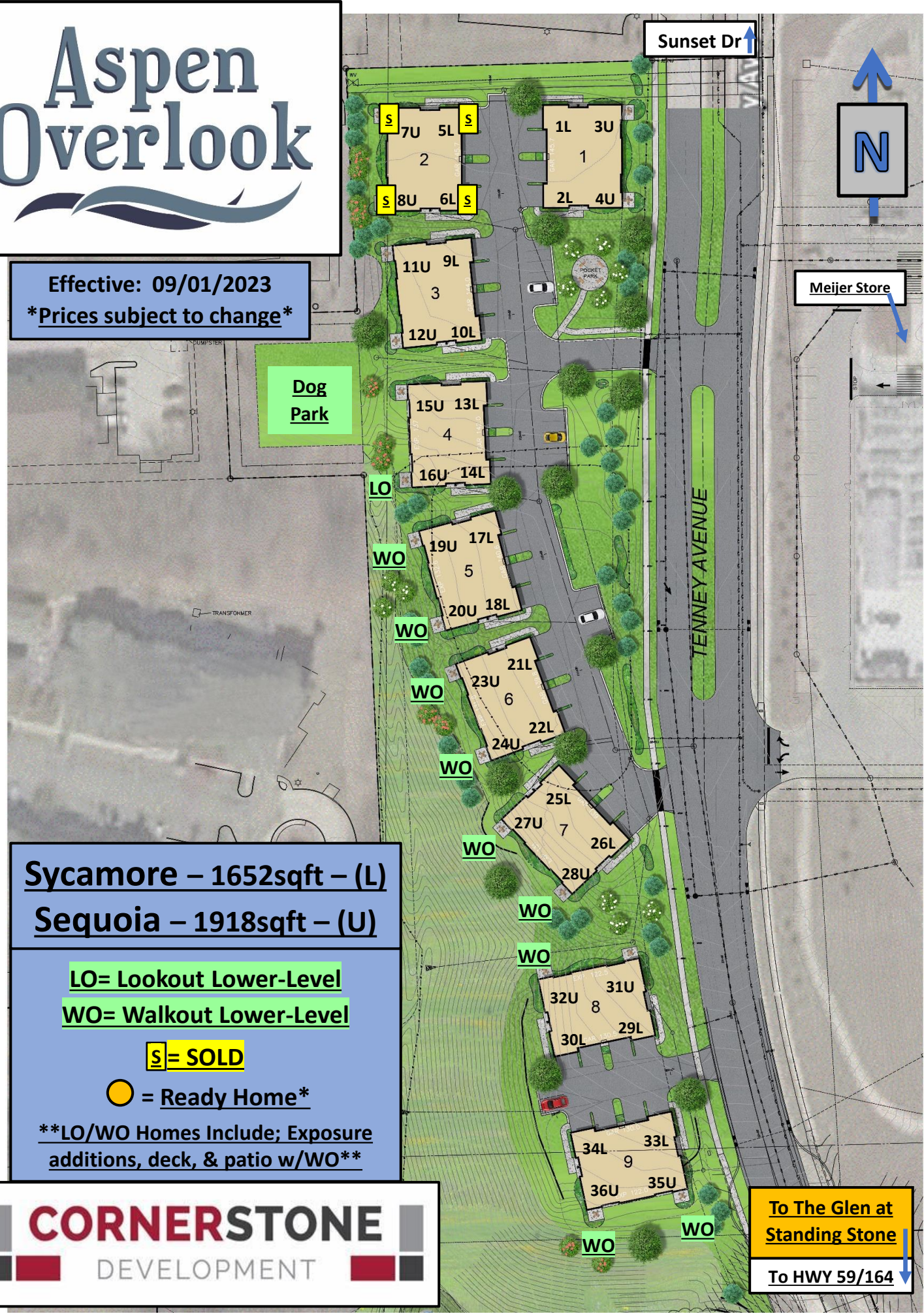
LO/WO Homes Include; Exposure additions, deck, & patio w/WO

CORNERSTONE

DEVELOPMENT

To The Glen at
Standing Stone

To HWY 59/164 ↓





ASPEN OVERLOOK PRICE LIST

Effective - 09/01/2023 ~Prices are Subject to Change~

Home	Location from Driveway	Upper/Lower	Exposure	Total Price
1- 1	Left	Lower	At Grade	\$389,999
1- 2	Right	Lower	At Grade	\$399,999
1- 3	Left	Upper*	-	\$399,999
1- 4	Right	Upper*	-	\$414,999
2- 5	Right	Lower	At Grade	SOLD
2- 6	Left	Lower	At Grade	SOLD
2- 7	Right	Upper	-	SOLD
2- 8	Left	Upper	-	SOLD
3- 9	Right	Lower	At Grade	\$439,999
3- 10	Left	Lower	At Grade	\$439,999
3- 11	Right	Upper	-	\$439,999
3- 12	Left	Upper	-	\$444,999
4- 13	Right	Lower	At Grade	\$429,999
4- 14	Left	Lower	Look Out	\$464,999
4- 15	Right	Upper	-	\$444,999
4- 16	Left	Upper	-	\$449,999
5- 17	Right	Lower	Walk Out	\$479,999
5- 18	Left	Lower	Walk Out	\$484,999
5- 19	Right	Upper	-	\$454,999
5- 20	Left	Upper	-	\$459,999
6- 21	Right	Lower	Walk Out	\$479,999
6- 22	Left	Lower	Walk Out	\$484,999
6- 23	Right	Upper	-	\$459,999
6- 24	Left	Upper	-	\$459,999
7- 25	Right	Lower	Walk Out	\$489,999
7- 26	Left	Lower	Walk Out	\$494,999
7- 27	Right	Upper	-	\$479,999
7- 28	Left	Upper	-	\$479,999
8- 29	Right	Lower	At Grade	\$454,999
8- 30	Left	Lower	Walk Out	\$509,999
8- 31	Right	Upper*	-	\$475,999
8- 32	Left	Upper*	-	\$489,999
9- 33	Left	Lower	Walk Out	\$489,999
9- 34	Right	Lower	Walk Out	\$499,999
9- 35	Left	Upper	-	\$489,999
9- 36	Right	Upper	-	\$499,999

* Upper layout changed

Look out homes include: Added exposure, deck and windows

Walk out homes include: Added exposure, deck, patio, windows and patio c

Ready Home *** SOLD Exposed LL

