



The Finnegan - Menomonee Falls

2,751 Sq. Ft. | 3 Bedrooms | 2.5 Bathrooms

Cornerstone Development started with the simple idea that smart floor plans, high-quality building materials, and the right amenities in an association-maintained environment would give homeowners more of what they wanted, **Time**. And we've stayed true to that vision.

For more than 15 years we've been anticipating and accommodating the latest lifestyle trends. We've designed our communities with quiet streets and walking paths, perfect for exercising or taking a leisurely stroll. Our communities include well-appointed common spaces, both indoors and outdoors, plus the advantage of minimal maintenance. It's home ownership, without the hassle.

The Glen at Wanaki is one of our newer lifestyle communities built on this tradition. This community has standalone ranch-style homes with condominium-like amenities. Enjoy shared spaces such as our clubhouse, pool, pickleball, and bocce courts along with easy access to all that Brookfield and Menomonee Falls have to offer.

Each Home Features:

- Modern country architecture with privacy features
- Convenient ranch-style living
- Thoughtfully designed, open-concept floor plans with generous storage
- Full lower level with an opportunity to be finished
- Abundant natural lighting with great views
- Seamless selection process with our in-house design center and personal designer to assist you in achieving your future home needs
- Extensive master landscaping throughout the community
- Association-managed landscape maintenance and snow removal

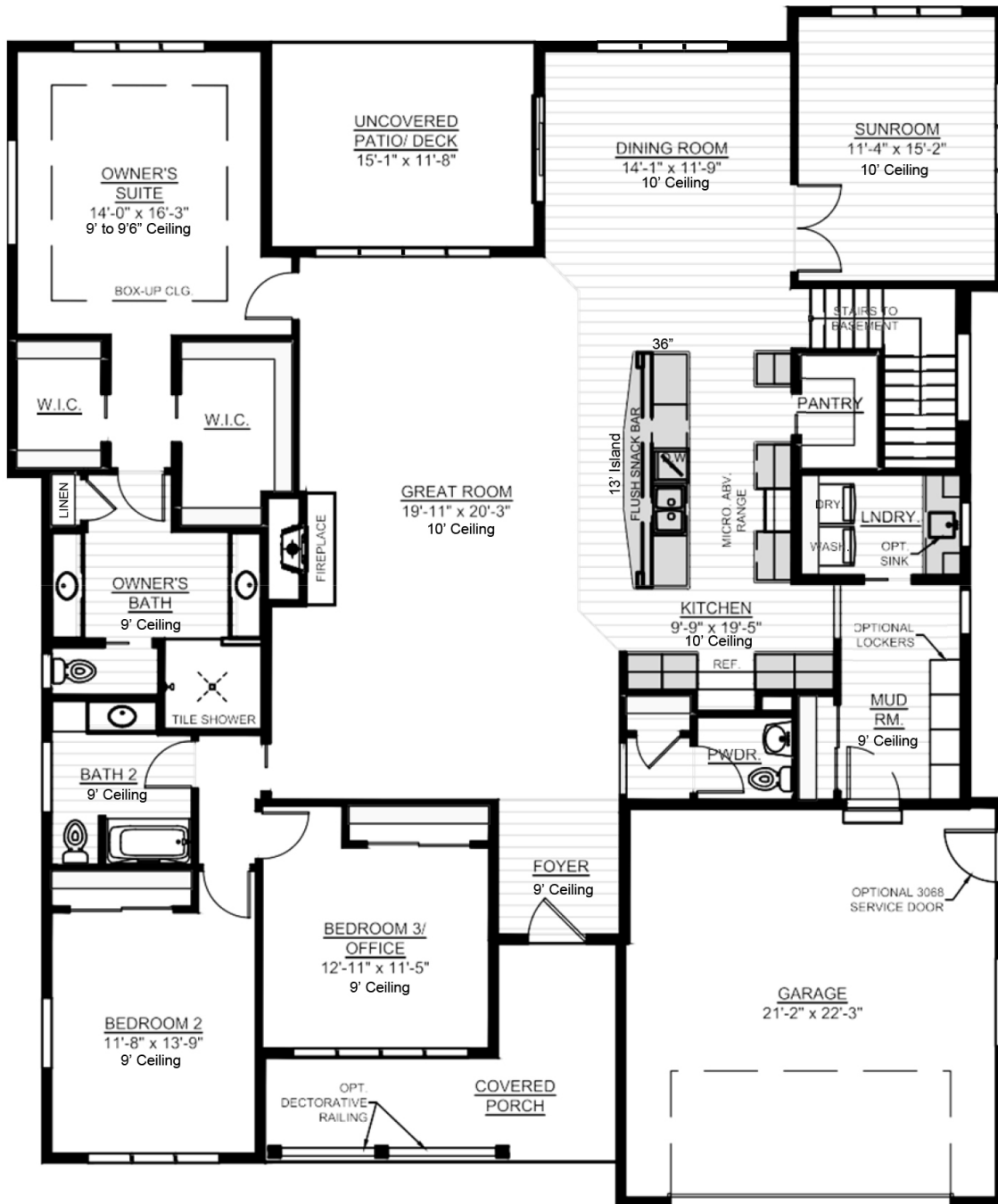
Experience Our Lifestyle and Low-maintenance Community Today!

N63W23849 Main St. Sussex, WI 53089
cornerstonedevelopment.com | 262-751-7367



The Finnegan - Menomonee Falls

2,751 Sq. Ft. | 3 Bedrooms | 2.5 Bathrooms



Scan to Learn More



Floor plan dimensions are approximate and may differ from actual plans that are subject to change without notice. Renderings are artist's conception only. Floor plans may vary elevation to elevation. Windows, doors and ceilings may vary on options and elevations selected. Specifications, equipment, features, options and pricing are subject to change without notice. Optional items indicated are available at an additional cost and some optional features may or may not be shown. Speak with a sales representative for complete information. Copyright © 2023. All Rights Reserved.

N63W23849 Main St. Sussex, WI 53089
cornerstonedevelopment.com | 262-751-7367

CORNERSTONE
DEVELOPMENT