



The Finnegan - Menomonee Falls

2,749 Sq. Ft. | 3 Bedrooms | 2.5 Bathrooms

Welcome to The Glen at Wanaki, a lively suburban community placed in the beautiful Village of Menomonee Falls. Our community contains 52 standalone homes expertly designed with your comfort in mind!

With your new home comes a variety of quality amenities to help you enjoy the ease of everyday living. Get ready for access to a beautiful community clubhouse with a pool, pickleball, and bocce ball courts! With Cornerstone Development handling services such as lawn care and snow removal, it's not hard to envision yourself getting back to spending your time the way you want.

Bordering the vibrant City of Brookfield and a short drive from Milwaukee, this setting allows you to have your own slice of suburban life at home while having access to shopping, restaurants, parks, and trails. You can stroll around Menomonee Falls for the specialty shops and scenic nature, or explore the plentiful dining and retail opportunities of Brookfield!

Each Home Features:

- Enduring architectural design
- High-end finishes and options available
- Turn-key purchase
(just like purchasing an existing home)
- Landscaping with irrigation
- Concrete driveway
- Composite deck or concrete patio
(lot dependent)

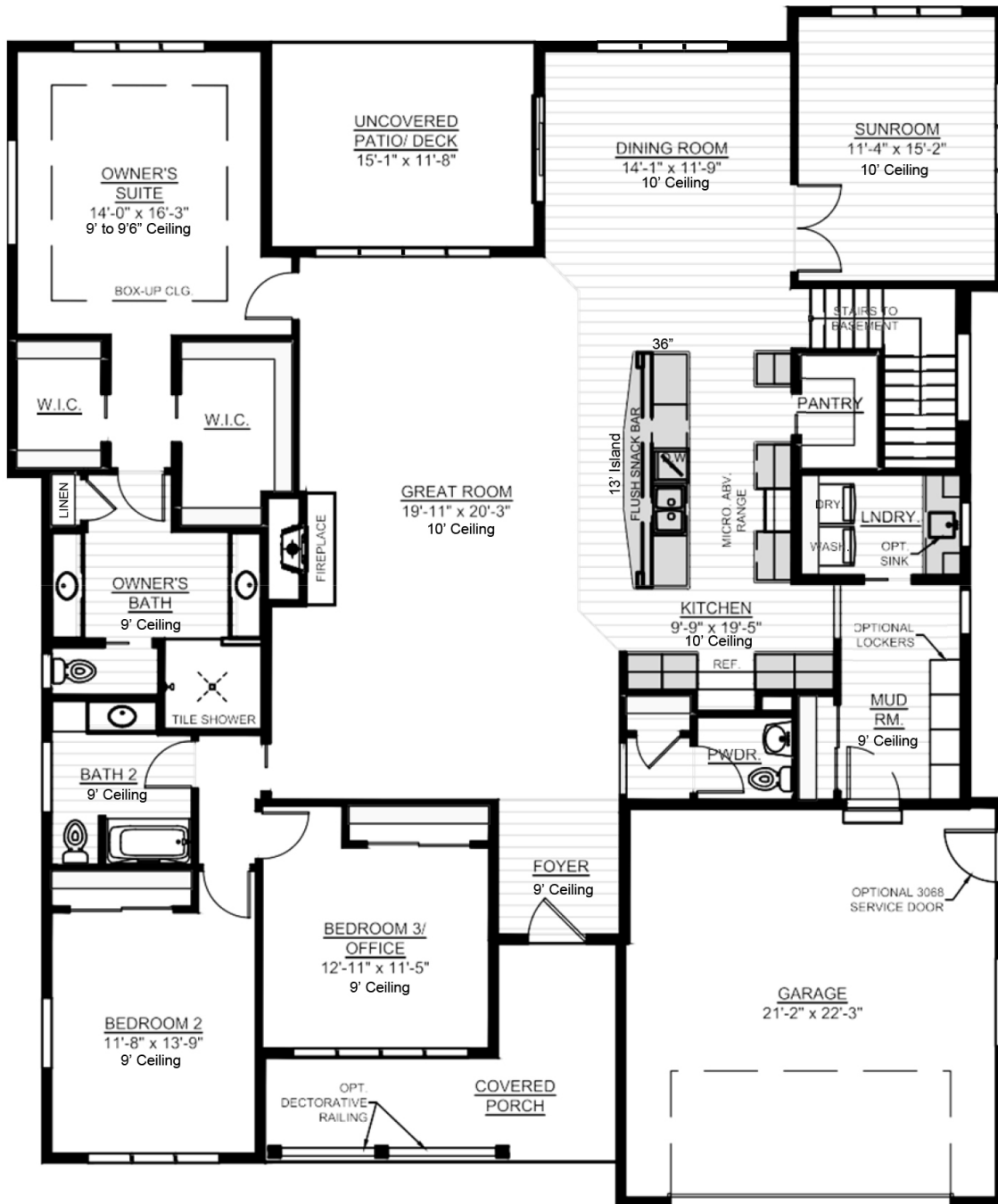
Experience Our Lifestyle and Low-maintenance Community Today!

N63W23849 Main St. Sussex, WI 53089
cornerstonedevelopment.com | 262-751-7367



The Finnegan - Menomonee Falls

2,749 Sq. Ft. | 3 Bedrooms | 2.5 Bathrooms



Scan to Learn More



Floor plan dimensions are approximate and may differ from actual plans that are subject to change without notice. Renderings are artist's conception only. Floor plans may vary elevation to elevation. Windows, doors and ceilings may vary on options and elevations selected. Specifications, equipment, features, options and pricing are subject to change without notice. Optional items indicated are available at an additional cost and some optional features may or may not be shown. Speak with a sales representative for complete information. Copyright © 2023. All Rights Reserved.

N63W23849 Main St. Sussex, WI 53089
cornerstonedevelopment.com | 262-751-7367

CORNERSTONE
DEVELOPMENT