

The Aspen

1740 Sq. Ft.



The Glen at Pewaukee Lake features 44 ranch-style homes nestled in an ideal setting within walking distance to the shops, dining, concerts and all that Pewaukee Lake has to offer. The community is complete with a well-appointed clubhouse, pickle & bocce ball courts and a maintenance free lifestyle!

The Glen at
Pewaukee
Lake

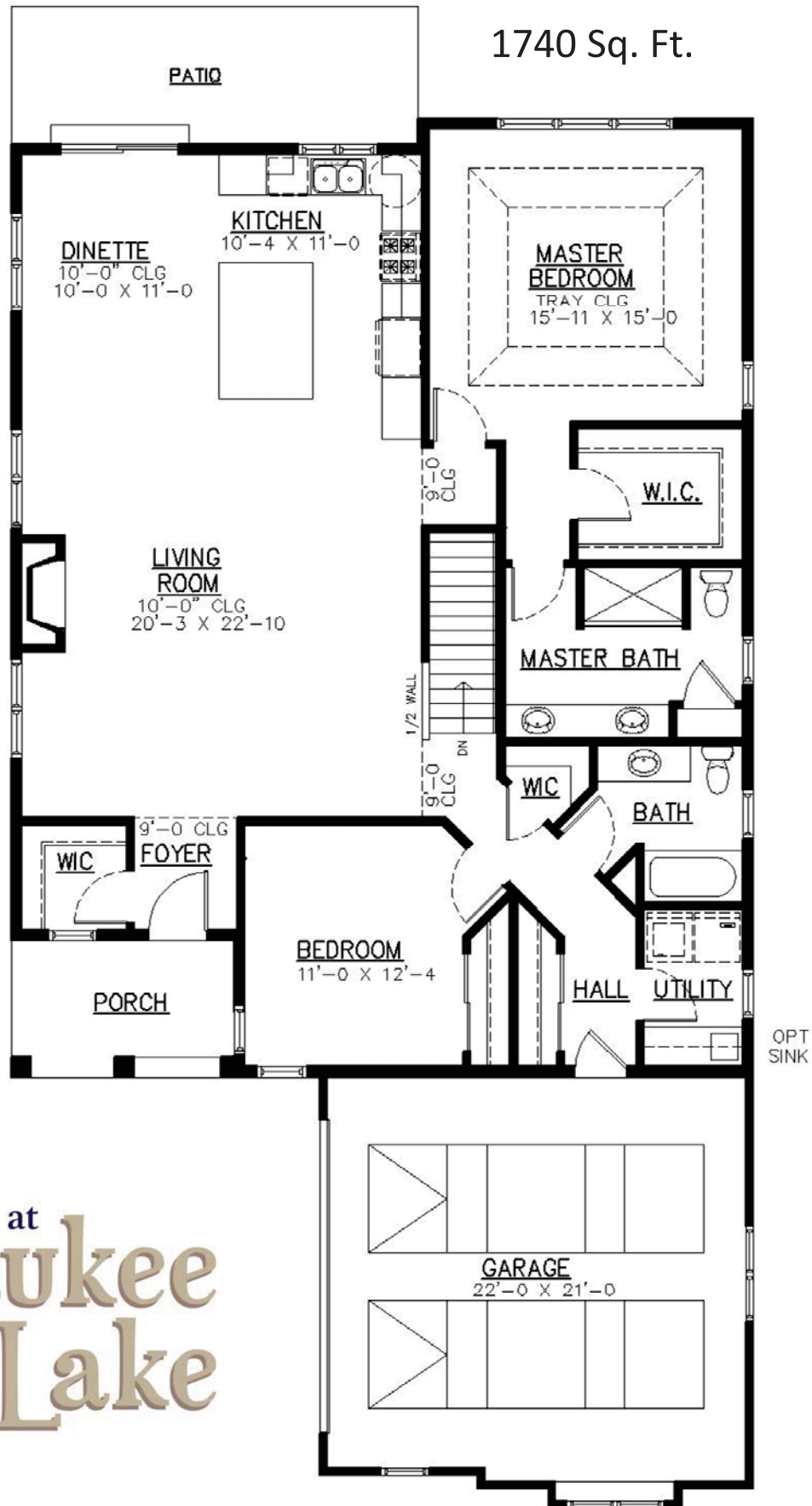
Each Home Features

- High-end finishes
- Landscaping w/ irrigation
- Concrete driveways, walks/patios
- Turn-key purchase
- Home site is additional

Floor plan dimensions are approximate and may differ from actual plans that are subject to change without notice. Renderings are artist's conception only. Floor plans may vary elevation to elevation. Windows, doors and ceilings may vary on options and elevations selected. Specifications, equipment, features, options and pricing are subject to change without notice. Optional items indicated are available at an additional cost and some optional features may or may not be shown.

Speak with a sales representative for complete information. Copyright 2021 Cornerstone Homes. All Rights Reserved.

The Aspen



The Glen at
**Pewaukee
Lake**